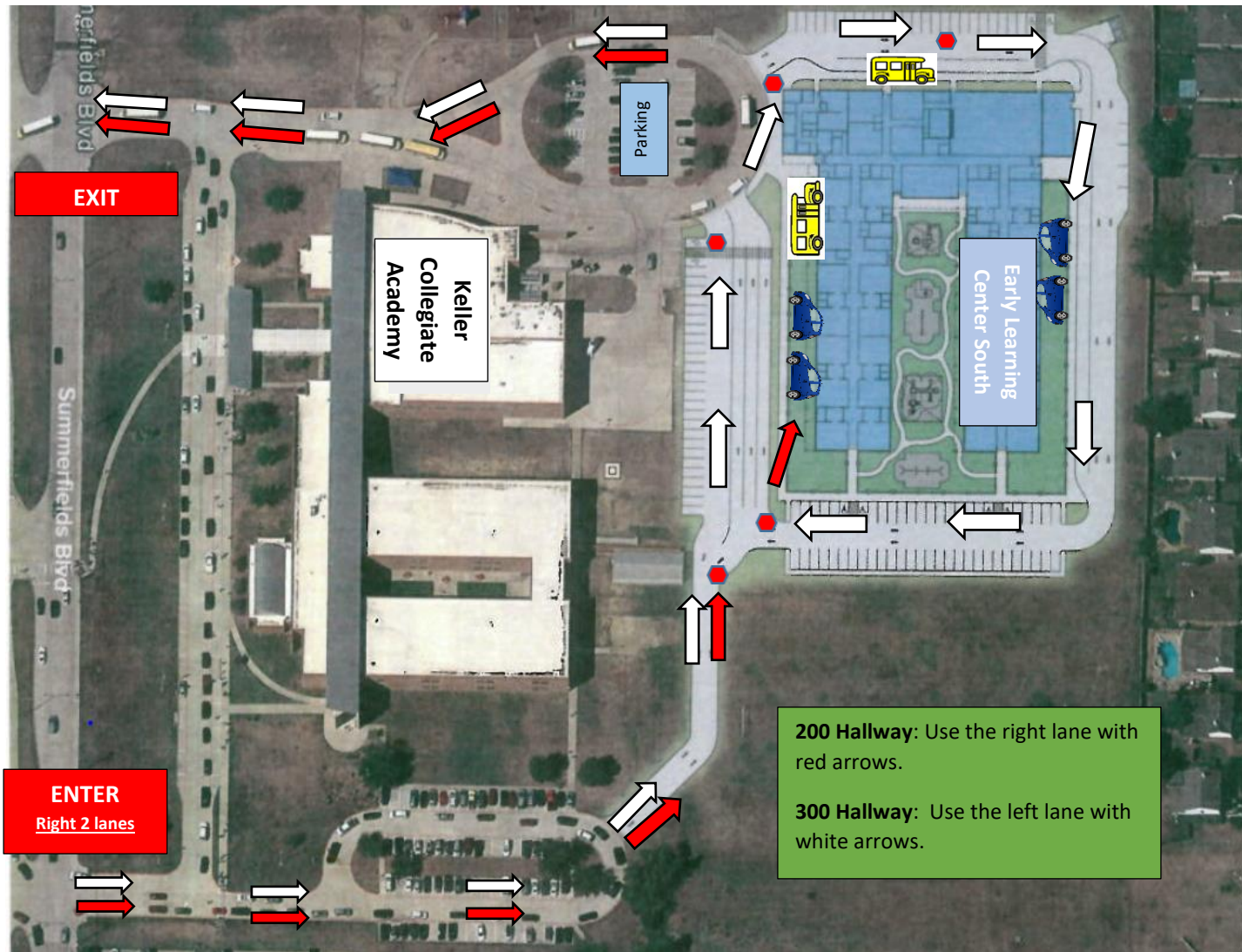




# ELC South Traffic Map



## Car Arrival/Dismissal

- All cars enter off Summerfields Blvd in the 2 right lanes.
- 200's hall: right lane
- 300's hall: left lane
- Students load/unload on the sidewalk closest to the school at the cones.
- Stay in your vehicle! Staff will take your student to and from the building.
- Watch for staff and stop signs! We will direct you through the line.
- All traffic exits from the west exit off Summerfields Blvd.
- If you arrive late, park and come to the school office.
- No cell phones in the school zone!